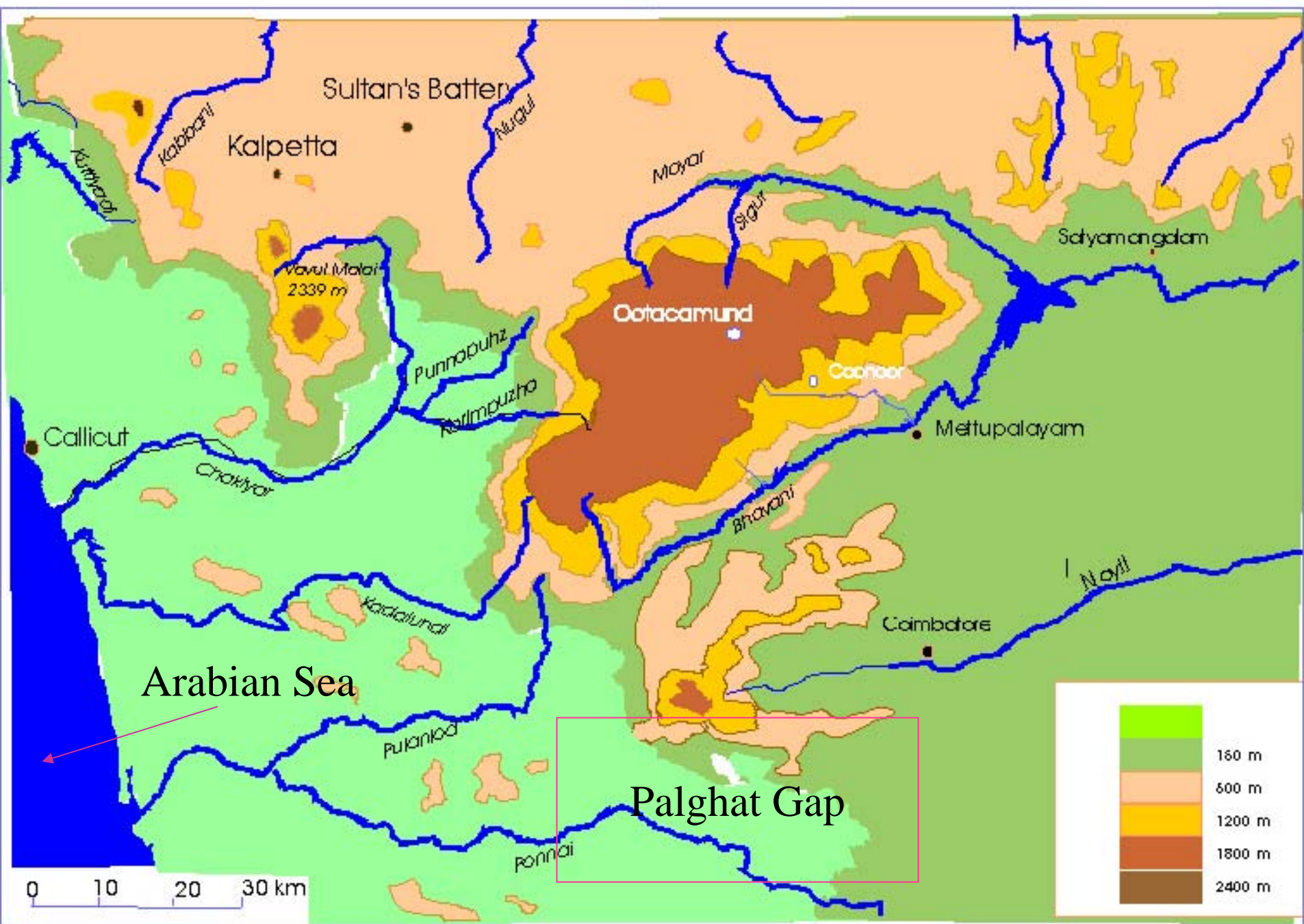


Nilgiri District a profile



Nilgiri Bioshpere 5500 sq km



Nilgiris a Profile

- Location-NW of the State situated in Western Ghats
- Elevation-Ranging from 900m to 2636m above MSL
- Average Rainfall-Ranging from 900mm to 1850mm
- Total Geographical Area-2,542.5 km²

Land Holding

- Land Holding Pattern- Forest (56.42%),
- Private holding (34.45 %) and
- others (9.13 %)

Urban

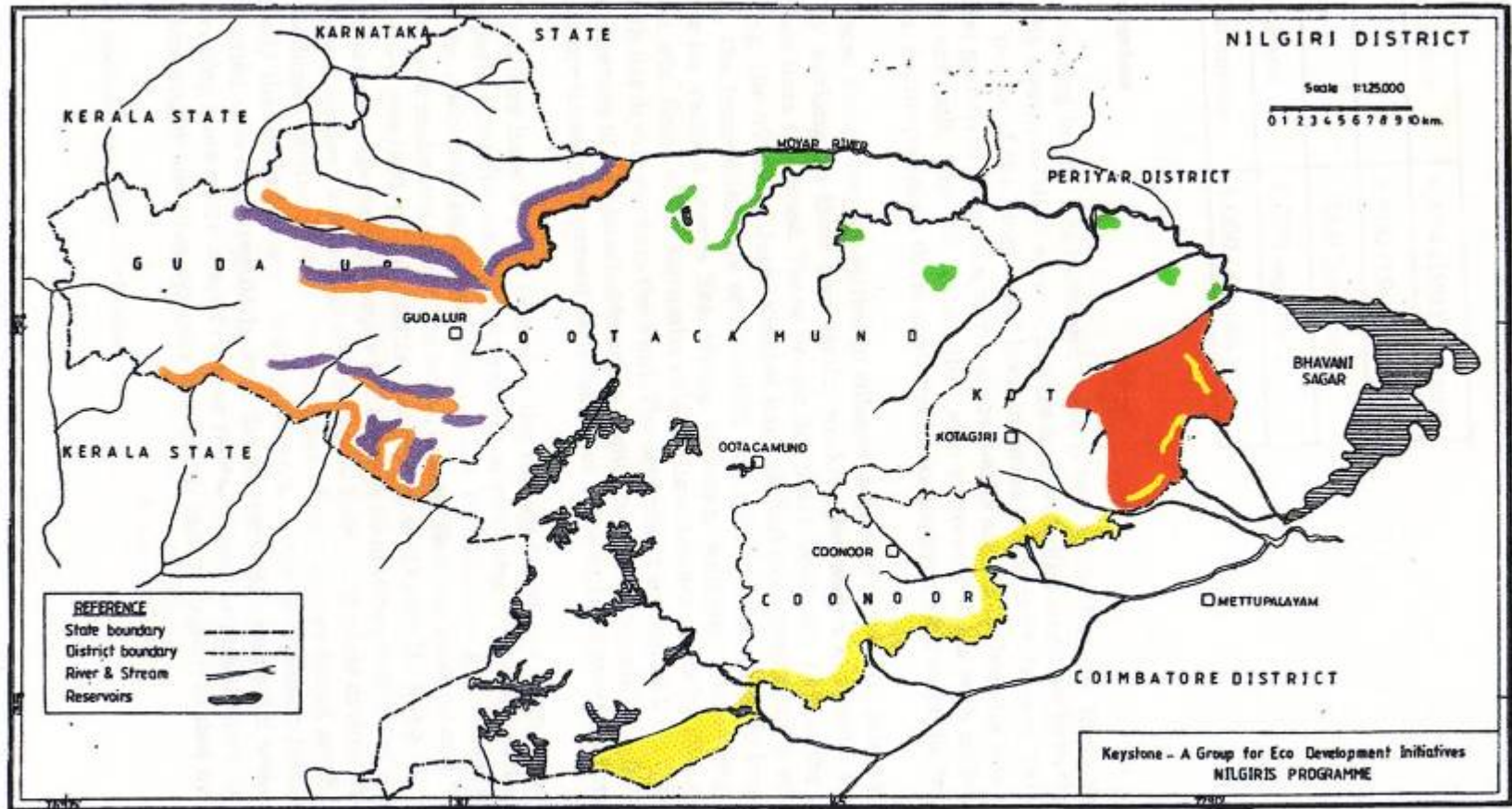
- Number of Taluks- Ooty, Coonoor, Gudalur and Kotagiri and these Taluks are divided in to 4 Panchayath Unions namely Ooty, Coonoor, Gudalur and Kotagiri
- Number of Municipalities- 2 (Ooty and Coonoor)
- Number of Revenue Villages-54 (Ooty 19, Coonoor 8, Gudalur 12 and Kotagiri 15)
- Number of Habitations-1182

People

- Alu Kurumbas 4,874
- Irulas 5,900
- Kasavas 900
- Kattunaikans 1,000
- Betta Kurumbas 3,000
- Kotas
- Todas 1,800

People's Distribution

DISTRIBUTION OF HUNTER GATHERER COMMUNITIES



ALUKURUMBAS

KASAVAS

BETTA KURUMBAS

IRULAS

KATTUNAICKANS

Map No : 5







Kurumbas of Semanarai



Cholanyakans















BANDIPURA NATIONAL PARK

